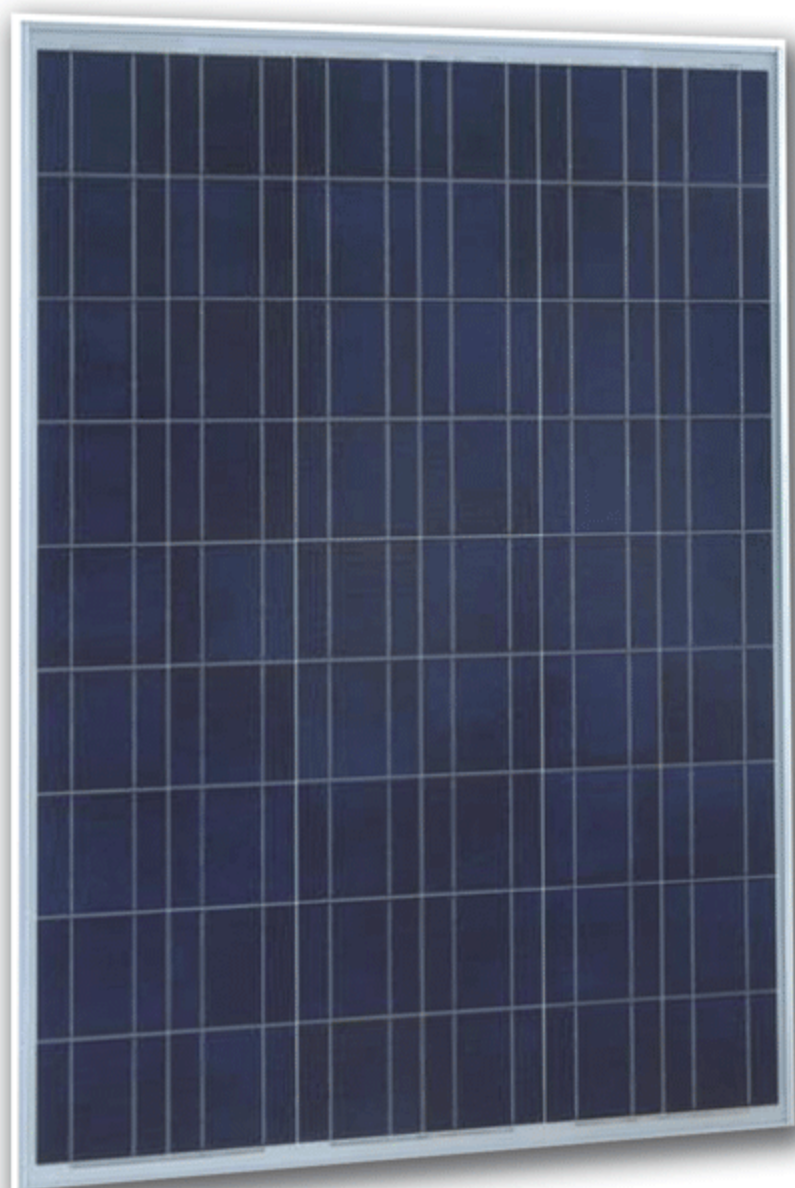


EL-54/6P Series

EL-54/6P180 (180 Watt)
 EL-54/6P190 (190 Watt)
 EL-54/6P200 (200 Watt)
 EL-54/6P210 (210 Watt)



CE ISO9001 IEC

Polycrystalline PV Modules

Everlight Polycrystalline photovoltaic panels offer industry leading performance in conversion efficiency and are designed specifically for our customers' residential, commercial and industrial needs.

Our Polycrystalline panels combine excellent solar power performance with great affordability. Our high power modules are designed and manufactured to the highest standards, are built to last and backed by our solid product warranty. These modules are designed for grid connected power plants up to 1000VDC and stand alone systems for battery charging or water pumping.

KEY FEATURES

Superior Performance

- Made with highly efficient, reliable Polycrystalline solar cells to ensure output stability and industry leading power generation.
- Low voltage temperature coefficient delivers higher power output
- Advanced surface texturing increases light absorption
- Each model is equipped with by-pass diodes to ensure performance even if partially shaded

Durability

- High-quality tempered glass, EVA and backsheet provide insulation and protection against the elements
- Our patented frame features anti-corrosion treatment and solid aluminum construction

Flexibility

- Our modules are stored and transported using custom packaging to ensure safe delivery
- Innovative hexagonal drainage holes increase flexibility and ease installation no matter what the application

Reliability

- 25 year limited warranty on power output
- 7 year limited warranty on materials and workmanship
- Manufactured to the highest standards in our ISO 9001:2008 certified plant, Helios Photovoltaic Co. Ltd.
- Certified by ISO, CE and IEC

Headquarters-Hong Kong

Everlight Corporation Ltd.
 2506, West Tower, Shun Tak Centre, 168-200 Connaught Road, Central, Hong Kong
 Tel: +852 6614 4916 Fax: +852 2815 1975
 URL: www.everlight-solar.com



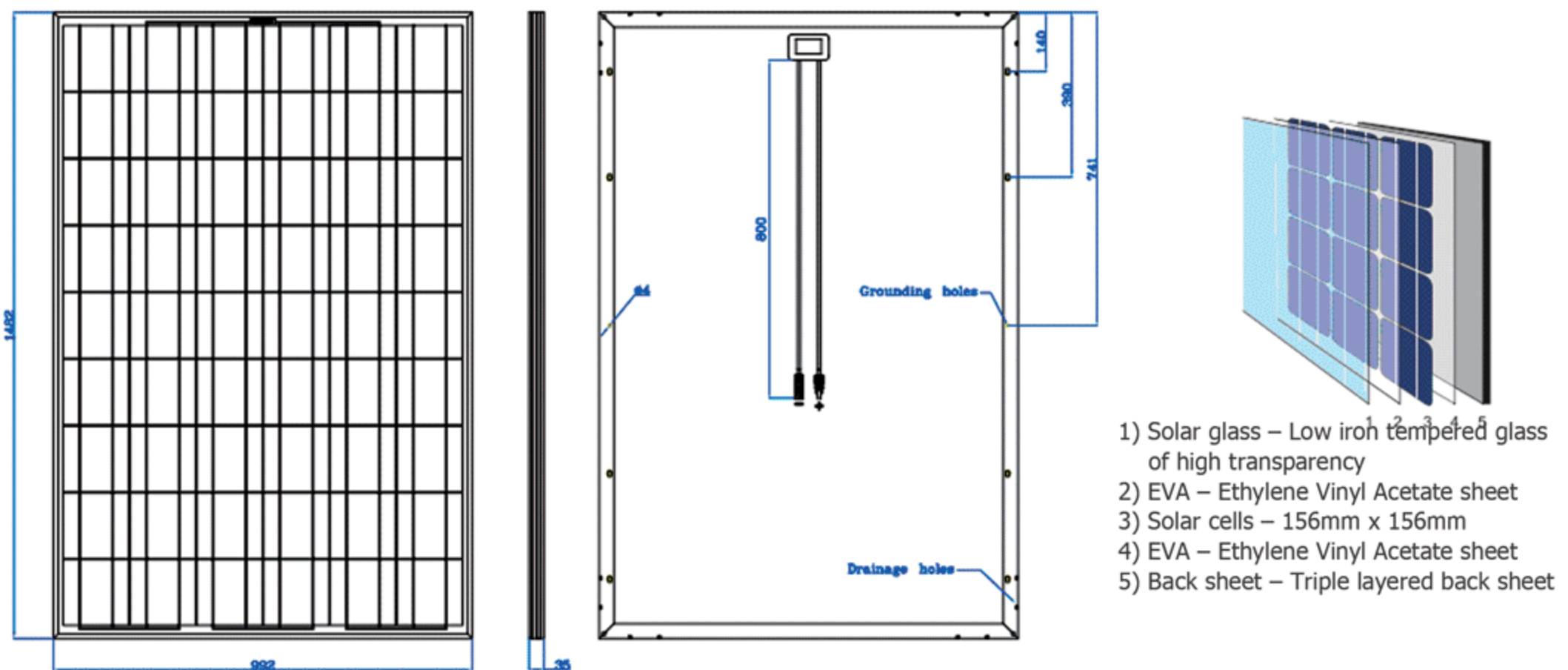
Manufactory-China

Helios Photovoltaic Co., Ltd.
 Unit 3-A, 86 West Wujin Avenue, Wujin Hi-tech Industrial Zone 213164, Changzhou, Jiangsu Province, China
 Tel: +86 519 8648 8901/2/3 Fax: +86 519 8648 2889
 URL: www.helios-pv.com

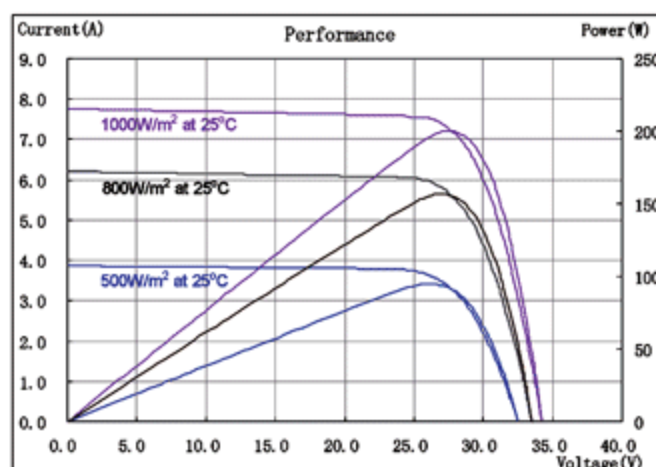
EL-54/6P Series Technical Specifications

ELECTRICAL CHARACTERISTICS				
Model	EL-54/6P180	EL-54/6P190	EL-54/6P200	EL-54/6P210
Maximum power (Pmax)	180W	190W	200W	210W
Voltage at max. power (Vmp)	26.5V	26.7V	27.4V	27.8V
Current at max. power (Imp)	6.79A	7.15A	7.29A	7.55A
Open circuit voltage (Voc)	34.1V	34.1V	34.2V	34.2V
Short circuit current (Isc)	7.05A	7.43A	7.75A	8.18A
Temperature coefficient of Isc	(0.065 ± 0.015)%/°C			
Temperature coefficient of Voc	-(160 ± 20)mV/°C			
Temperature coefficient of power	-(0.45 ± 0.05)%/°C			
Operating temperature	-40/+85°C			
MECHANICAL CHARACTERISTICS				
Cell type	156 x 156 Polycrystalline solar cell			
Cell array	54 pieces in a 9 x 6 matrix connected in series			
Dimensions (mm)	1482 X 992 X 35			
Weight (kg)	17.8			
Frame	Clear anodized aluminum alloy type universal frame; silver color			
Construction	Front: High-transmission 3.2mm tempered glass Back: Polyester Encapsulant: EVA			

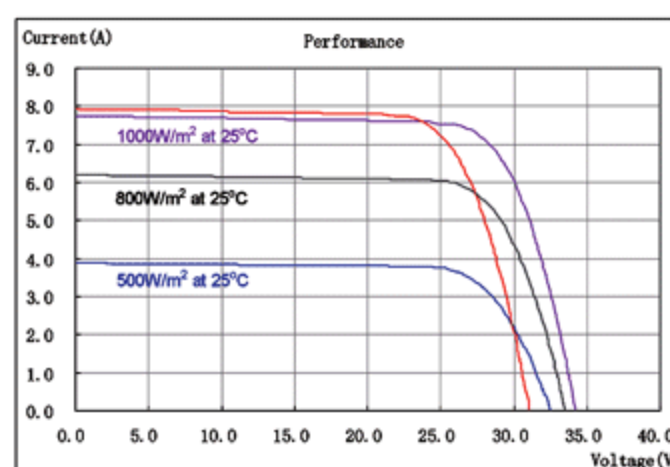
Module Diagram



Electrical Performance



Power Output



TEMPERATURE COEFFICIENTS

Isc = +0.065 %/°C
 Voc = -0.436 %/°C
 Pmax = +0.488 %/°C

Note: Due to continuous innovation, research and production improvement, design and specifications are subject to change without notice. No rights can be derived from this product information sheet and Everlight assumes no liability whatsoever connected to or resulting from the use of any information contained herein. Kindly contact Everlight to obtain the latest product manuals before using.